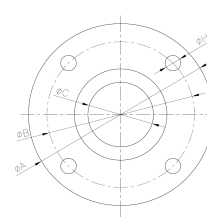
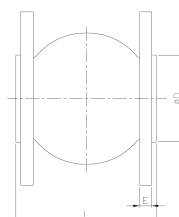
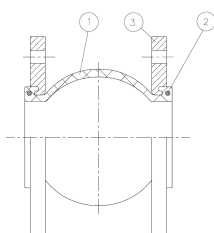


RUBBER EXPANSION JOINT

ANSI FLANGED ENDS

FEATURES

- ◆ Expansion Joint.
- ◆ Reduction of Noise.
- ◆ Absortion of vibration.
- ◆ Allows axial and lateral movement.
- ◆ Easy to install.
- ◆ Body made of EPDM, Ends of carbon steel.
- ◆ Ends connecting with flanges ANSI 150 B 16.5.
- ◆ Max. Working pressure 10 bar.
- ◆ Max. Working Vacuum 400 mbar.
- ◆ Working temperature – 10 °C + 105 °C.
- ◆ Burst Pressure 30 bar.



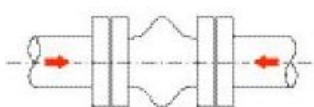
No.	Denominación / Name	Material	Acabado Superficial / Surface Treatment
1	Body	EPDM + Nylon	---
2	Ring	Carbon steel	Zinc plated.
3	Flange	Carbon steel	Zinc plated.

Medida / Size	DN	PN	E							Peso / Weight
			ØA	ØB	ØC	ØD	n x ØH	L	E	Kg
1 1/4"	32	10	117.5	88.9	32	69	4 x 16	95	16	2.46
1 1/2"	40	10	127	98.4	40	69	4 x 16	95	16	2.80
2"	50	10	152.4	120.6	52	86	4 x 19	105	16	3.90
2 1/2"	65	10	177.8	139.7	68	106	4 x 19	115	16	4.77
3"	80	10	190.5	152.4	76	126	4 x 19	130	18	5.92
4"	100	10	228.6	190.5	103	150	8 x 19	135	18	7.26
5"	125	10	254	215.9	128	180	8 x 22	170	20	9.20
6"	150	10	279.4	241.3	152	209	8 x 22	180	22	11.78
8"	200	10	342.9	298.5	194	260	8 x 22	200	22	17.40
10"	250	10	406.4	361.9	250	320	12 x 25.4	240	24	24.76
12"	300	10	482.6	431.8	300	367	12 x 25.4	260	24	33.70
14"	350	10	533.4	476.2	320	408	12 x 28.6	265	26	45.90
16"	400	10	596.9	539.7	372	472	16 x 28.6	265	26	53.00
18"	450	10	635	577.8	415	522	16 x 31.7	265	26	55.42
20"	500	10	698.5	635	454	570	20 x 31.7	265	28	68.80

RUBBER EXPANSION JOINT

ANSI FLANGED ENDS

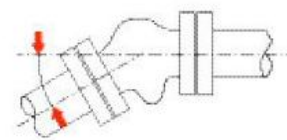
Diagram of displacements



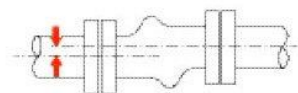
Axial Compression



Axial Elongation



Angular Deflection



Lateral Displacement

Compresión Axial Axial Compression (mm)	Elongación Axial Axial Stretch (mm)	Deflexión Angular Angular deflection (α 1)	Desplazamiento lateral Lateral Displacement (mm)
10	6	15º	9
10	6	15º	9
10	7	15º	10
13	8	15º	12
15	8	15º	12
19	12	15º	15
19	12	15º	15
20	12	10º	15
20	12	10º	22
28	16	10º	22
28	16	10º	25
28	16	10º	25
28	16	10º	25
28	16	10º	25
28	16	10º	25

PRESSURE TEMPERATURE RATING

