

Stainless Steel Valves



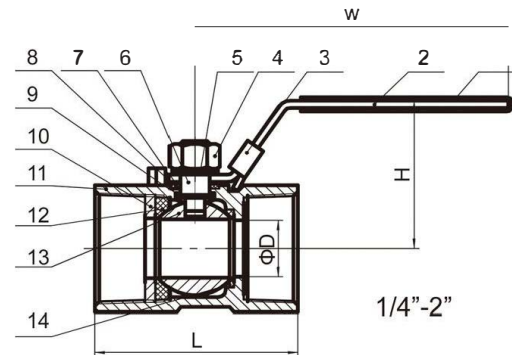
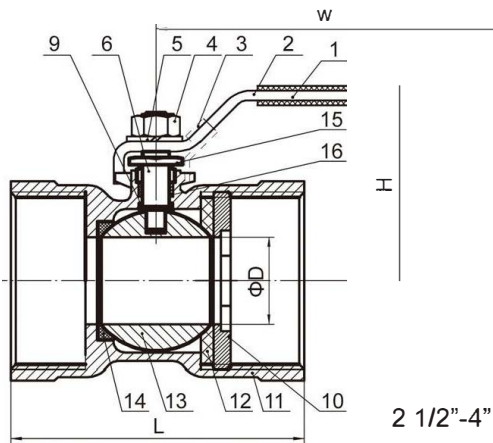
BALL VALVE

1PC BALL VALVE (101)



FEATURES

- ◆ 1000PSI/PN63
- ◆ Reduce Port
- ◆ Investment Casting
- ◆ Blow-out proof Stem
- ◆ Casting Approved AD2000-W0
- ◆ PED97/23/EC(CE0035)Approved
- ◆ W.P: 1/4"-2" 1000psi 2 1/2"-4" 800psi
- ◆ Thread: ASME B1.20.1 BS21.DIN2999/259, ISO228-1, JIS B 0203, ISO7/1
- ◆ Inspection Testing: API598, EN12266



ITEM	DESIGNATION	MATERIAL
1	HANDLE SLEEVE	PVC
2	HANDLE	304
3	LOCKING	304
4	STEM NUT	304
5	SPRING WASHER	304
6	STEM	304/316
7	PACKING RING	304
8	STEM PACKING	PTFE
9	THRUST WASHER	PTFE
10	CAP	CF8/CF8M
11	BODY	CF8/CF8M
12	BALL SEAT	RPTFE
13	BALL	304/316
14	BALL SEAT	PTFE
15	GLAND NUT	304
16	STEM PACKING	PTFE

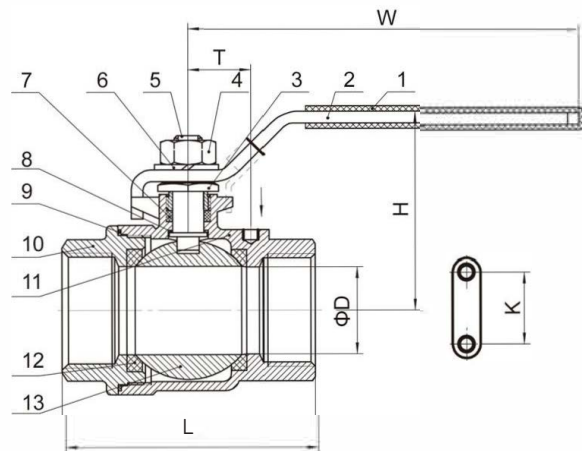
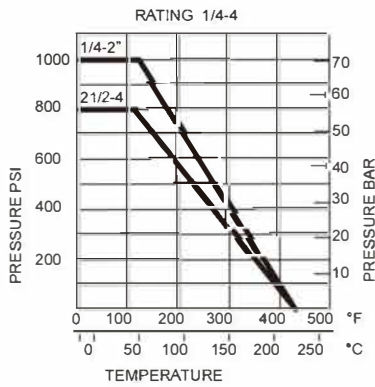
SIZE	ΦD	L	H	W	S	
1/4"	5	39	31	65	17	HEX
3/8"	6.8	44	36	85	21	
1/2"	9.2	56.5	41	95	25	
3/4"	12.5	59	44	95	32	
1"	15	71	48	111	38	
1-1/4"	20	78	54	111	49	
1-1/2"	25	83	65	135	53	
2"	32	100	72	135	65	OCT
2-1/2"	38	120	80	154	83	
3"	50	140	100	191	98	
4"	64	170	129	246	127	

BALL VALVE

2PC HEAVY TYPE BALL VALVE (205)

FEATURES

- ◆ 1000PSI/PN63
- ◆ Full Port
- ◆ Blow-out-proof stem design
- ◆ Body and end caps quality investment casting
- ◆ PED97/23/PE (CE0035) Approved
- ◆ Casting Approved AD2000-W0
- ◆ Thread: ASME B1.20.1 BS21.DIN2999/259, ISO228-1, JIS B 0203, ISO7/1
- ◆ Inspection Testing: API598, EN12266



ITEM	DESIGNATION	QTY	MATERIAL
1	HANDLE SLEEVE	1	PVC
2	HANDLE	1	304
3	GLAND NUT	1	304
4	STEM NUT	1	304
5	STEM	1	304/316
6	SPRING WASHER	1	304
7	STEM PACKING	1	PTFE
8	THRUST WASHER	1	PTFE
9	JOINT GASKET	1	PTFE
10	CAP	1	CF8/CF8M
11	BODY	1	CF8/CF8M
12	BALL SEAT	2	RPTFE
13	BALL	1	CF8/CF8M

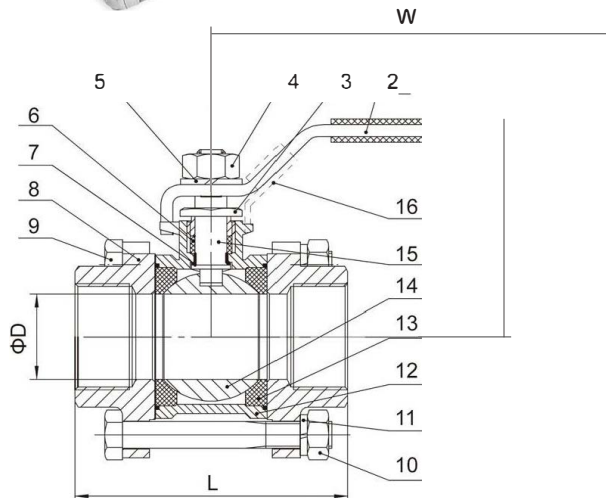
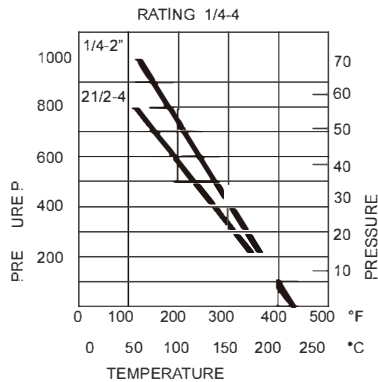
SIZE	D	L	H	W	K	T
1/4"	11.6	50	48	91	28.5	12.5
3/8"	12.5	50	48	91	28.5	12.5
1/2"	15	58	52	103	28.5	13
3/4"	20	65	61	111	34.8	21
1"	25	80	65	126	34.8	22.5
1-1/4"	32	92	79	154	38.1	23.5
1-1/2"	38	105	83	154	38.1	23.5
2"	50	125	97	191	38.1	23.5
2-1/2"	64	155.6	129	244	56	32
3"	76	183	138	244	56	35
4"	94	240	175	315	63	50

BALL VALVE

3PC BALL VALVE (301)

FEATURES

- ◆ 1000PSI/PN63
- ◆ Full Port
- ◆ Investment Casting
- ◆ Blow-out proof Stem
- ◆ Locking Device Handle(Optional)
- ◆ PED97/23/PE (CE0035) Approved
- ◆ Anti-Static device(option)
- ◆ Thread: ASME B1.20.1 BS21.DIN2999/259, ISO228-1, JIS B 0203, ISO7/1
- ◆ Inspection Testing: API598, EN12266



ITEM	DESIGNATION	QTY	MATERIAL
1	HANDLE SLEEVE	1	PVC
2	HANDLE	1	304
3	GLAND NUT	1	304/316
4	STEM NUT	1	304
5	STEM WASHER	1	304
6	STEM PACKING	1	PTFE
7	THRUST WASHER	1	PTFE
8	END CAP	2	CF8/CF8M
9	BOLT	4(6)	304
10	NUT	4(6)	304
11	SPRING WASHER	4(6)	304
12	BODY	1	CF8/CF8M
13	BALL SEAT	2	RPTFE
14	BALL	1	CF8/CF8M
15	STEM	1	304/316
16	LOCKING DEVICE	1	304

SIZE	D	L	H	W
1/4"	11	50	48	103
3/8"	12	50	48	103
1/2"	15	60	52	103
3/4"	20	70	61	123
1"	25	80	65	123
1-1/4"	32	93	79	153
1-1/2"	38	100	83	153
2"	50	125	97	185
2-1/2"	64	158	135	243
3"	76	179	144	243
4"	94	223	172	315

BALL VALVE

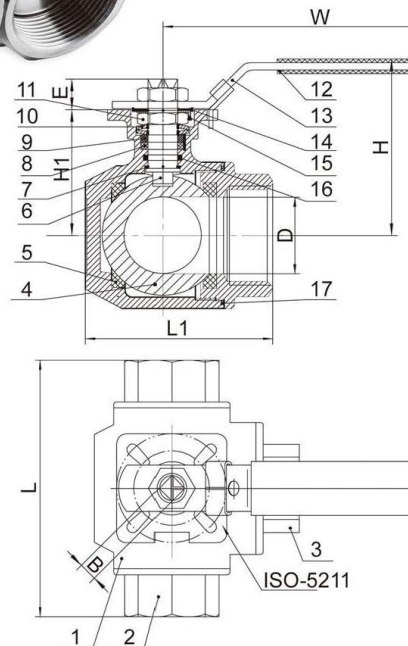
3WAY BALL VALVE WITH ISO5211 MOUNTING PAD (401L/T)

FEATURES

- ◆ 1000PSI/PN63
- ◆ Reduce Port
- ◆ Investment Casting
- ◆ Blow-out proof Stem
- ◆ ISO5211 Mounting Pad
- ◆ PED97/23/PE (CE0035) Approved
- ◆ Anti-Static device(option)
- ◆ L or T Port Option
- ◆ 4 Sests For Rigid Ball Supporting
- ◆ Thread: ASME B1.20.1 BS21.DIN2999/259, ISO228-1, JIS B 0203, ISO7/1
- ◆ Inspection Testing: API598, EN12266



ITEM	DESIGNATION	QTY	MATERIAL
1	BODY	1	CF8/CF8M
2	CAP(1)	2	CF8/CF8M
3	CAP(2)	1	CF8/CF8M
4	BALL	1	CF8/CF8M
5	BALL SEAT	4	RPTFE
6	STEM	1	304/316
7	THUST WASHER	1	PTFE
8	STEM PACKING	1	PTFE
9	GLAND NUT	1	304
10	SPRING WASHER	2	304
11	NUT	2	304
12	HANDLE COVER	1	PVC
13	HANDLE	1	304/316
14	WASHER	1	304
15	THRUST WASHER	1	304
16	O-RING	1	VITON
17	JOINT GASKET	1	PTFE



SIZE	ΦD	W	L±2	L1±2	H	B _{0.07} ⁰	E±1	ISO5211	H1
1/4"	9	139	79	64	73	9	9	F04/03	42
3/8"	11	139	79	64	73	9	9	F04/03	42
1/2"	12.5	139	79	64	73	9	9	F04/03	42
3/4"	16	139	83	68	80	9	9	F04/03	49
1"	20	160	104	82	95	11	11	F05/04	59.5
1-1/4"	25	160	120	90	98	11	11	F05/04	63
1-1/2"	32	185	126	106	110	14	14	F07/05	73.5
2"	38	185	147	123	119	14	14	F07/05	82.8

BALL VALVE

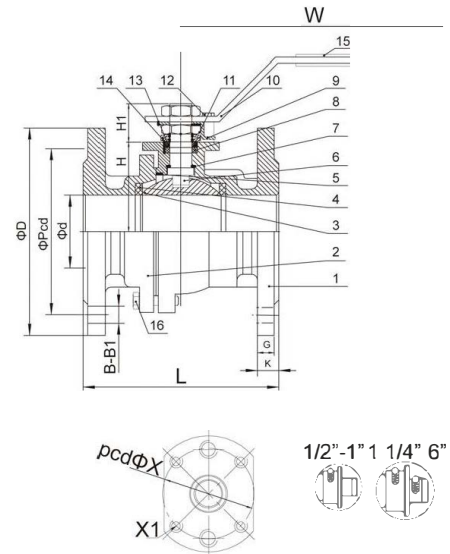
2PC ANSI FLANGED BALL VALVE (201F)

FEATURES

- ◆ ANSI CLASS150
- ◆ Full Port
- ◆ Investment Casting
- ◆ Blow-out proof Stem
- ◆ PED97/23/PE (CE0035) Approved
- ◆ Casting Approved AD2000-W0
- ◆ Anti-Static device(option)
- ◆ Design: ASME B16.34
- ◆ End Flange:ASME B16.5
- ◆ Inspection Testing: API598



ITEM	DESIGNATION	QTY	MATERIALS
1	BODY	1	CF8/CF8M
2	CAP	1	CF8/CF8M
3	BALL	1	CF8/CF8M
4	BALL SEAT	2	RPTFE
5	JOINT GASKET	1	PTFE
6	STEM	1	304/316
7	THRUST WASHER	1	PTFE
8	STEM PACKING	1	PTFE
9	STOPPER	1	304
10	HANDLE	1	304
11	NUT	2	304
12-1	BOLT	1	304
12-2	PIN	1	304
13	STEM RING	1	304
14	BELLEVILLE WASHER	2	304
15	HANDLE SLEEVE	1	PVC
16	BOLT	4-8	304



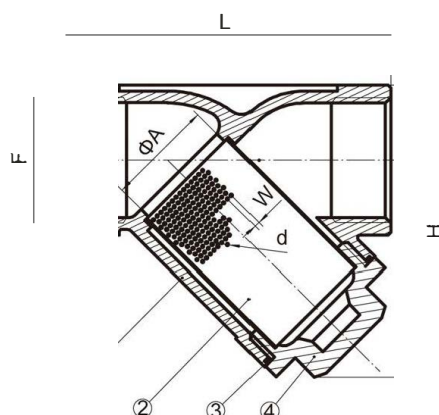
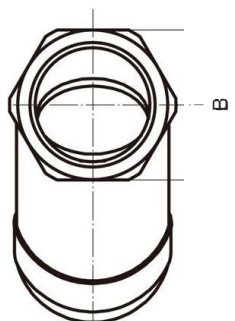
SIZE	Φd	CLASS-150					L	H	H1	W	X	X1
		G	K	D	B	B1						
1/2"	15	8.2	10.7	88	10.2	4	108	26.5	16.45	130	42	M5
3/4"	20	9.5	12	97	16.2	4	117.1	30.1	17.2	130	42	M5
1"	25	10.5	13	107	16.2	4	127	35.25	23.3	160	50	M6
1-1/4"	32	11.5	14	115	16.2	4	140	40.8	23.3	160	50	M6
1-1/2"	38	12.5	16	125	16.2	4	166	48	30.2	200	70	M8
2"	50	14	17.5	150.5	19.3	4	178	56.5	30.2	200	70	M8
2-1/2"	65	16.8	20.3	176	19.3	4	190	74.5	29.7	220	70	M8
3"	80	17.7	21	188.5	19.3	4	203	86	39.6	260	102	M10
4"	100	17.5	21	227	19.3	8	229	107.75	38.1	260	102	M10
5"	125	20	23	252	22	8	356	133.25	-	-	125	M12
6"	150	21	24	277	22	8	394	152.75	-	-	125	M12

Y-STRAINER

Y-STRAINER (502)

FEATURES

- ◆ 800PSI(PN40)
- ◆ Investment Casting
- ◆ PED97/23/PE (CE0035) Approved
- ◆ Casting Approved AD2000-W0
- ◆ Thread: ASME B1.20.1 BS21.DIN2999/259, ISO228-1, JIS B 0203, ISO7/1
- ◆ Inspection Testing: DIN3230/3, EN12266



SIZE	A	B	H	L	W	d
1/4"	15	26	58	65	2	1
3/8"	15	26	58	65	2	1
1/2"	15	26	58	65	2	1
3/4"	20	33	68	78.5	2	1
1"	25	41	88	89	2	1
1-1/4"	32	49	100	105	2	1
1-1/2"	40	56	108	120	2	1
2"	50	69	130	140	2	1

ITEM	DESIGNATION	QTY	MATERIAL
1	BODY	1	CF8/CF8M
2	GASKET	1	304/316
3	SCREEN	1	304/316
4	CAP	1	CF8/CF8M

CHECK VALVE

SWING CHECK VALVE (601)

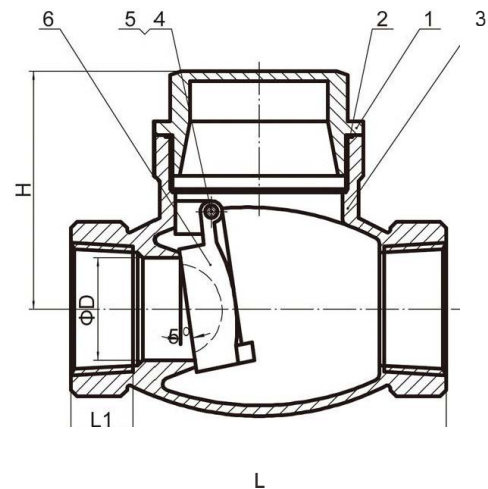
FEATURES

- ◆ 200PSI(PN16)
- ◆ Investment Casting
- ◆ PED97/23/PE (CE0035) Approved
- ◆ Casting Approved AD2000-W0
- ◆ Thread: ASME B1.20.1 BS21.DIN2999/259, ISO228-1, JIS B 0203, ISO7/1
- ◆ Inspection Testing: DIN3230/3, EN12266



MATERIALS LIST

ITEM	DESIGNATION	MATERIAL
1	BONNET	CF8/CF8M
2	GASKET	PTFE
3	BODY	CF8/CF8M
4	HANGER PIN	304
5	PLUG GASKET	PTFE
6	DISC	CF8/CF8M



DIMENSION TABLE

ITEM	SIZE	1/4'	3/8'	1/2'	3/4'	1'	1 1/4'	1 1/2'	2'	2 1/2'	3'
D		6	10	15	20	25	32	38	50	62	75
H		42	42	45	53	60	64	76	82	90	100
L		63	63	65	80	90	104	120	141	163	191
L1		10	10	12	15	17	17	20	23	25	28

GLOBE VALVE (801)

FEATURES:

- ◆ 200PSI/PN16
- ◆ Investment Casting
- ◆ PED97/23/EC(CE0035)Approved
- ◆ Casting Approved AD200 0WO
- ◆ Rising stem
- ◆ Thread: ASME B1.20.1
BS21.DIN2999/259
ISO228-1,JS B 0203,
ISO7/1
- ◆ Inspection Testing:API598,EN12266

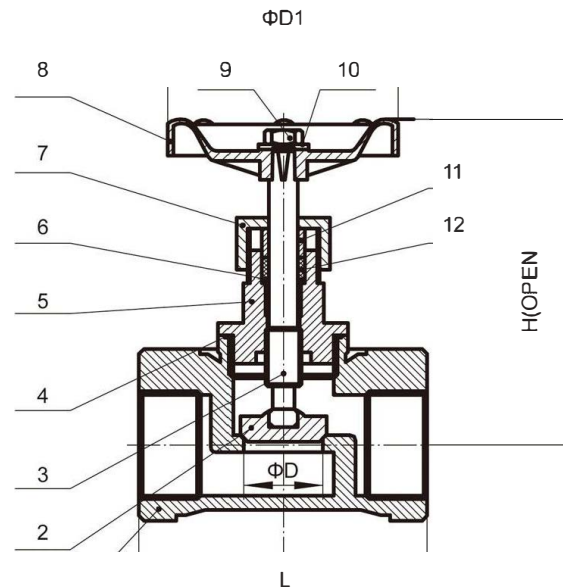


DIMENSION TABLE

ITEM \ SIZE	1/2'	3/4'	1'	1 1/4'	1 1/2'	2'
D	12	15	20	25	32	40
H	87	90	99	118	140	155
D1	70	70	80	80	100	100
L	52	60	71	82	90	101

MATERIALS LIST

ITEM	DESIGNATION	MATERIAL
1	BODY	CF8/CF8M
2	PETAL	CF8/CF8M
3	STEM	304
4	GASKET	PTFE
5	CAP	CF8/CF8M
6	WASHER	304
7	BONNET	CF8/CF8M
8	HAND WHEEL	ALUMINUM ALLOY
9	NUT	304
10	WASHER	304
11	RING	304
12	STEM PACKING	PTFE



GATE VALVE

GATE VALVE (901)

FEATURES

- ◆ 200PSI/PN 16
- ◆ Investment Casting
- ◆ PED97/23/EC(CE0035)Approved
- ◆ Casting Approved AD2000 WO
- ◆ Non-rising stem
- ◆ Thread: ASME B1.20.1
BS21.DIN2999/259
ISO228-1, J S B 0203,
ISO7/1
- ◆ Inspection Testing: API598, EN12266

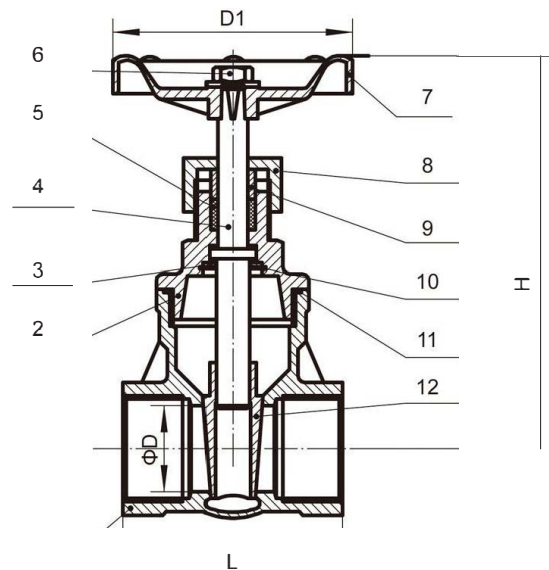


DIMENSION TABLE

ITEM \ SIZE	1/2'	3/4'	1'	1 1/4'	1 1/2'	2'
D	15	20	25	32	40	50
H	92	99	113	128	147	168
D1	70	70	80	80	100	100
L	55	60	66	76	86	96

MATERIALS LIST

ITEM	DESIGNATION	MATERIAL
1	BODY	CF8/CF8M
2	BONNET	CF8/CF8M
3	STOP RING	304
4	STEM	304
5	PACKING	PTFE
6	HANDWHEEL NUT	304
7	HAND WHEEL	ALUMINUM ALLOY
8	PACKING NUT	304
9	RING	304
10	LOCK NUT	304
11	GASKET	PTFE
12	DISC	CF8/CF8M

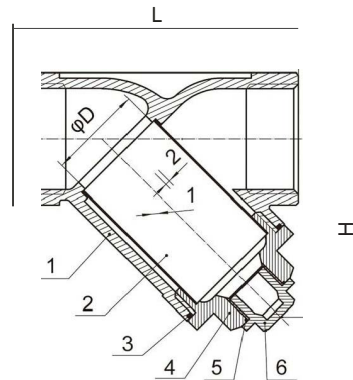
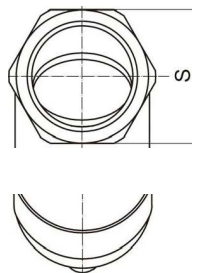


Y-STRAINER

Y—STRAINER WITH SMALL PLUG (504)

FEATURES

- ◆800PSI(PN40)
- ◆Investment Casting
- ◆PED97/23/PE(CE0035) Approved
- ◆Casting Approved AD2000-WO
- ◆Thread: ASME B1.20.1
BS21.DIN2999/259
ISO228-1,JIS B 0203,ISO7/1
- ◆Inspection Testing:API 598,EN12266



ITEM	DESIGNATION	QTY	MATERIAL
1	BODY	1	CF8M/CF8
2	SCREEN	1	SUS304
3	GASKET	1	PTFE
4	CAP	1	CF8M/CE8
5	GASKET	1	PTFE
6	DISCHARGE PLUG	1	CF8M/CF8

ITEM	SIZE	1/4-3/8"	1/2"	3/4"	1"	1 1/4"	1 1/2"	2"	2 1/2"	3"	4"
D		12	15	20	25	32	40	50	65	76	94
H		65	65	80	90	104	120	138	183	198	238
L		42	42	51	65	66	75	86	112	123	163

