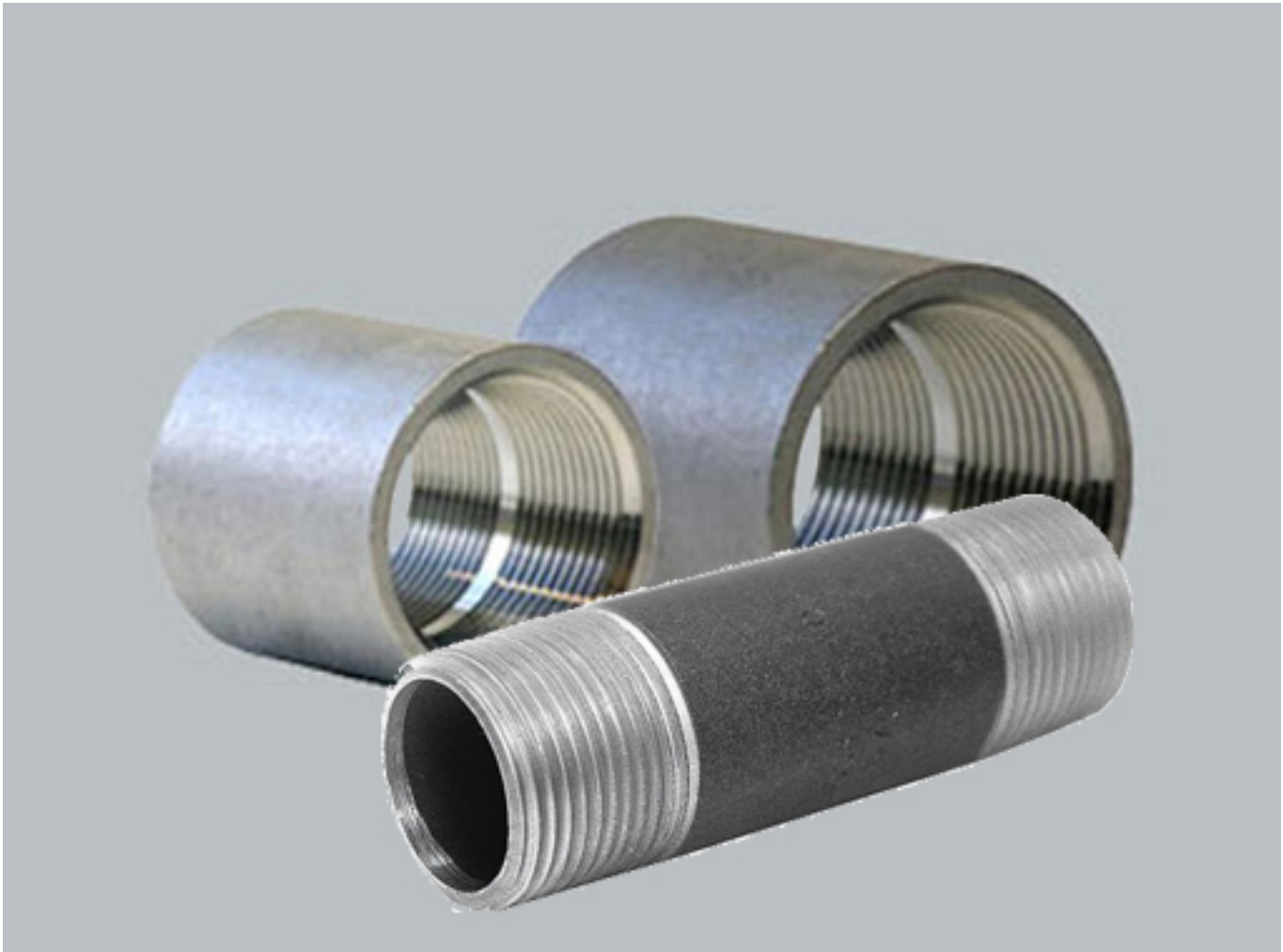




Nipples & Couplings



PIPE NIPPLES AND PIPE COUPLINGS



Specification

Unless otherwise specified welded nipples ASTM A 53 are furnished on orders for steel nipples in standard and extra strong sizes $\frac{1}{8}$ " – 8" NPS (6 – 200 DN).

Welded steel nipples (A 53 Type F or Type E) are available in standard and extra strong sizes $\frac{1}{8}$ " – 8" NPS (6 – 200 DN), right hand threads, black or galvanized.

Seamless nipples manufactured for the U.S. and International markets are not phosphate coated. Seamless nipples manufactured for Canada are phosphate coated.

Seamless steel pressure tube nipples (ASTM A 106 Grade B) are available in standard and extra strong sizes $\frac{1}{8}$ " – 8" NPS (6 – 200 DN) with right hand threads, black only.

Right and left steel nipples are available in standard and extra heavy weight sizes $\frac{1}{8}$ " – 4" NPS (8 – 50 DN), in 4" (102mm) and 6" (152mm) lengths.

Nipples are available from stock in $\frac{1}{8}$ " – 8" NPS (6 – 200 DN) diameter, close to 12 NPS (300 DN) in length. Sizes 13" – 24" NPS (325 – 600 DN). (Prices on application.)

Steel pipe nipples meet ASTM A733.

Identification

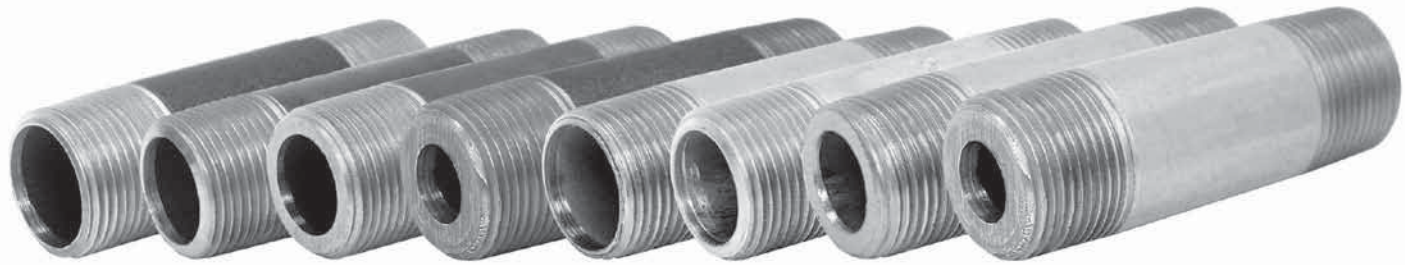
Where possible, each seamless pipe nipple is identified with the following:

- A trade mark
- Seamless designation "SMLS"
- Pipe schedule STD, XS/XH, SCH 160 and XXS/XXH
- Material designation A106 B
- Heat number for traceability

PIPE NIPPLES

Seamless Pipe Nipples

Black & Galvanized, Std. Sch. 40, XH Sch. 80, Sch. 160, XXH



- Standard
Black Sch. 40
- Extra Heavy
Black Sch. 80
- 160
Black Sch. 160
- XXH
Black
- Standard
Galv. Sch. 40
- Extra Heavy
Galv. Sch. 80
- 160
Galv. Sch. 160
- XXH
Galvanized

Material

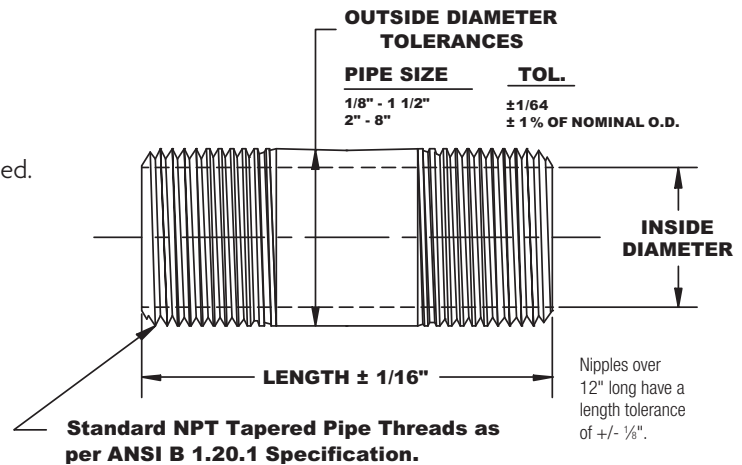
ASTM A106 Grade B Seamless Pipe
ASTM A333 Grade 6 Seamless Pipe (For Canada only)

Note: Galvanized nipples from Longview Texas plant are electroplated. Galvanized nipples from Beck plant are hot dipped.

Applicable Specification

ASTM A733
(Refer to the chart below for specific pipe dimensions.)

Note: Minimum wall thickness at any point to be not more than 10% over and 3 1/2% under nominal wall thickness specified for that size pipe.



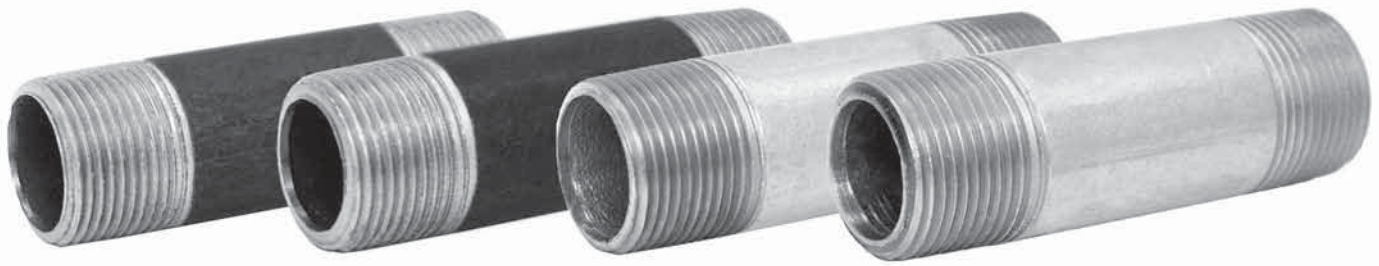
Pipe Size	Pipe O.D.	Length Close	Pipe Nipple Lengths																	
			in	in	in															
1/8	0.405	3/4	1 1/2	2	2 1/2	3	3 1/2	4	4 1/2	5	5 1/2	6	7	8	9	10	11	12		
1/4	0.540	7/8	1 1/2	2	2 1/2	3	3 1/2	4	4 1/2	5	5 1/2	6	7	8	9	10	11	12		
3/8	0.675	1	1 1/2	2	2 1/2	3	3 1/2	4	4 1/2	5	5 1/2	6	7	8	9	10	11	12		
1/2	0.840	1 1/8	1 1/2	2	2 1/2	3	3 1/2	4	4 1/2	5	5 1/2	6	7	8	9	10	11	12		
3/4	1.050	1 3/8	1 1/2	2	2 1/2	3	3 1/2	4	4 1/2	5	5 1/2	6	7	8	9	10	11	12		
1	1.315	1 1/2		2	2 1/2	3	3 1/2	4	4 1/2	5	5 1/2	6	7	8	9	10	11	12		
1 1/4	1.660	1 5/8		2	2 1/2	3	3 1/2	4	4 1/2	5	5 1/2	6	7	8	9	10	11	12		
1 1/2	1.900	1 3/4		2	2 1/2	3	3 1/2	4	4 1/2	5	5 1/2	6	7	8	9	10	11	12		
2	2.375	2			2 1/2	3	3 1/2	4	4 1/2	5	5 1/2	6	7	8	9	10	11	12		
2 1/2	2.875	2 1/2				3	3 1/2	4	4 1/2	5	5 1/2	6	7	8	9	10	11	12		
3	3.500	2 5/8					3	3 1/2	4	4 1/2	5	5 1/2	6	7	8	9	10	11	12	
4	4.500	2 7/8							4	4 1/2	5	5 1/2	6	7	8	9	10	11	12	
5	5.563	3								4 1/2	5	5 1/2	6	7	8	9	10	11	12	
6	6.625	3 1/8									4 1/2	5	5 1/2	6	7	8	9	10	11	12

Note: Other lengths available.
8" Pipe Size available as POA - contact your Anvil Representative for details.

PIPE NIPPLES

Welded Pipe Nipples

Black & Galvanized, Std. Sch. 40, XH Sch. 80



**Standard
Black Schedule 40**

**Extra Heavy
Black Schedule 80**

**Standard
Galv. Schedule 40**

**Extra Heavy
Galv. Schedule 80**

Material

ASTM A53 Standard Specification for Pipe Steel, Black, Galvanized, Hot-Dipped, Zinc Coated, Welded.

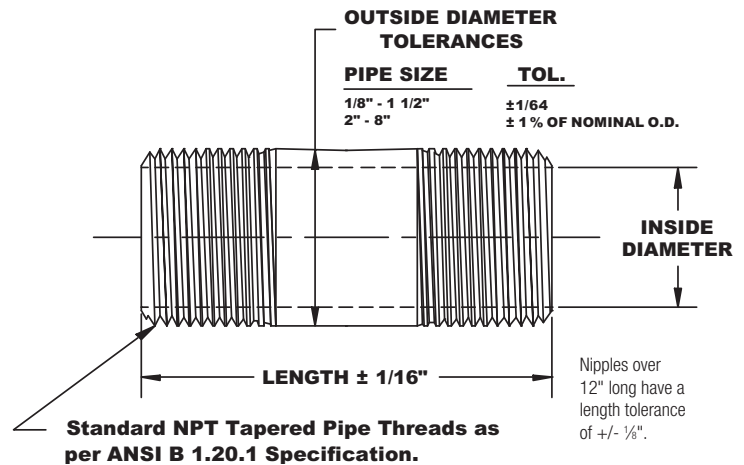
Applicable specification

ASTM A733

(Refer to the chart below for specific pipe dimensions.)

Note: Minimum wall thickness at any point to be not more than +/- 10% nominal wall thickness specified for that size pipe.

Standard and Extra Heavy right and left nipples available in 1/8" - 4" diameter and 4" and 6" lengths.



Pipe Size in	Pipe O.D. in	Length Close in	Pipe Nipple Lengths															
			1 1/2	2	2 1/2	3	3 1/2	4	4 1/2	5	5 1/2	6	7	8	9	10	11	12
1/8	0.405	3/4																
1/4	0.540	7/8																
3/8	0.675	1																
1/2	0.840	1 1/8																
3/4	1.050	1 3/8																
1	1.315	1 1/2																
1 1/4	1.660	1 7/8																
1 1/2	1.900	1 3/4																
2	2.375	2																
2 1/2	2.875	2 1/2																
3	3.500	2 5/8																
4	4.500	2 7/8																
5	5.563	3																
6	6.625	3 1/8																

Note: Other lengths available.

8" Pipe Size available as POA - contact your Anvil Representative for details.

PIPE COUPLINGS

Steel Pipe Couplings

Merchant Couplings

Standard, Full & Half



Size		Outside Diameter (Coupling)		Length				Threads		Unit Weight							
				Full		Half				Full				Half			
				Straight Tapped		Taper Tapped				Straight Tapped		Taper Tapped					
NPS	DN	in	mm	in	mm	in	mm	in	mm	lbs	kg	lbs	kg	lbs	kg	lbs	kg
1/8	6	0.563	14	1 1/16	22	1 1/32	9	27	686	0.03	0.01	0.03	0.01	0.01	0.00	0.01	0.00
1/4	8	0.719	18	1 1/16	30	1 7/32	13	18	457	0.07	0.03	0.07	0.03	0.03	0.01	0.03	0.01
3/8	10	0.875	22	1 1/16	30	1 7/32	13	18	457	0.10	0.05	0.10	0.05	0.05	0.02	0.05	0.02
1/2	15	1.063	27	1 1/16	40	2 3/32	18	14	356	0.18	0.08	0.18	0.08	0.08	0.04	0.08	0.04
3/4	20	1.313	33	1 5/8	41	3/4	19	14	356	0.26	0.12	0.26	0.12	0.12	0.05	0.12	0.05
1	25	1.576	40	2	51	1 5/16	24	11 1/2	292	0.42	0.19	0.42	0.19	0.18	0.08	0.18	0.08
1 1/4	32	1.900	48	2 1/16	52	3 1/32	25	11 1/2	292	0.50	0.23	0.50	0.23	0.23	0.10	0.23	0.10
1 1/2	40	2.200	56	2 1/16	52	3 1/32	25	11 1/2	292	0.67	0.30	0.67	0.30	0.32	0.15	0.32	0.15
2	50	2.750	70	2 3/8	54	1	25	11 1/2	292	1.03	0.47	1.03	0.47	0.47	0.21	0.47	0.21
2 1/2	65	3.250	83	3 3/8	79	1 1/2	38	8	203	2.09	0.95	2.15	0.98	0.96	0.44	0.96	0.44
3	80	4.000	102	3 3/4	83	1 5/8	40	8	203	3.36	1.52	3.46	1.57	1.60	0.73	1.60	0.73
3 1/2	90	4.625	117	3 3/8	86	1 5/8	41	8	203	4.82	2.19	5.18	2.35	2.22	1.01	2.22	1.01
4	100	5.000	127	3 1/2	89	1 11/16	43	8	203	4.80	2.18	4.87	2.21	2.11	0.96	2.11	0.96
5	125	6.296	160	3 3/4	95	1 13/16	46	8	203	8.31	3.77	8.75	3.97	3.80	1.72	3.80	1.72
6	150	7.390	188	4	102	1 13/16	46	8	203	11.18	5.07	11.88	5.39	5.28	2.39	5.28	2.39

- Manufactured in accordance with ASTM specification A865 and A589.
- Merchant couplings in sizes 1/8" NPS (6 DN) through 2" NPS (50 DN) are normally supplied straight tapped. Sizes 2 1/2" NPS (65 DN) and larger are taper tapped.
- Taper tapped standard merchant couplings in sizes 1/8" NPS (6 DN) through 2" NPS (50 DN) are available upon request.
- API line pipe couplings are used in all sizes over 6" NPS (150 DN).
- Couplings from 1/8" NPS (6 DN) through 6" NPS (150 DN) are dipped in rust preventative.
- Galvanized full couplings are also available.

Note

- Half couplings are chamfered on one end and squared on the other.