

Cast Iron Valves



Flanged Cast Iron Gate Valve



Sizes 2" - 12"

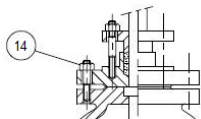
FEATURES & BENEFITS

- ISO-9001
- Gate Valve-Flanged Ends
- 200 WOG- 125 WSP
- Class 125
- Iron Body, Bronze Mounted (IBBM)
- 3 Bossings for Tapping
- Bolted Bonnet
- Non Rising Bronze Stem
- Solid Wedge
- Conforms to MSS-SP70
- Flanged Ends Conform w/ ANSI B16.1
- Bituminous Coating
- Sizes 2" - 24"

DIMENSIONS

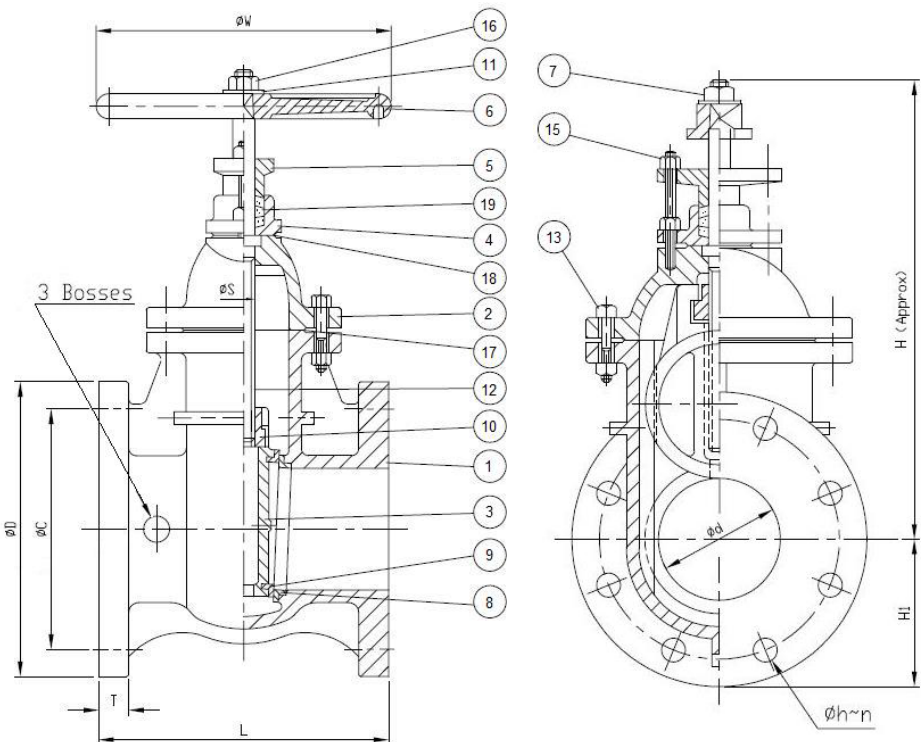
Part #	Ød Size	L	ØD	ØC	Øh	n	T	ØS	H	H1	ØW	Approx. Weight
100F08	2"	7	6	4-3/4	3/4	4	5/8	5/8	10-1/8	3	7-1/16	26.4
100F09	2-1/2"	7-1/2	7	5-1/2	3/4	4	11/16	5/8	11-1/2	3-1/2	7-1/16	34.1
100F10	3"	8	7-1/2	6	3/4	4	3/4	11/16	12-3/8	3-3/4	7-7/8	44.0
100F11	4"	9	9	7-1/2	3/4	8	15/16	16/16	14-1/2	4-1/2	8-13/16	77.0
100F12	5"	10	10	8-1/2	7/8	8	15/16	7/8	16-3/4	5	9-7/8	96.8
100F13	6"	10-1/2	11	9-1/2	7/8	8	1	15/16	18-5/8	5-1/2	9-7/8	126.5
100F14	8"	11-1/2	13-1/2	11-3/4	7/8	8	1-1/8	1	22	6-3/4	11	220.0
100F15	10"	13	16	14-1/4	1	12	1-3/16	1-1/4	26-1/2	8	12-7/16	314.6
100F16	12"	14	19	17	1	12	1-1/4	1-1/4	30-3/8	9-1/2	14	481.8

Bonnet, Packing Box & Gland



MATERIAL SPECIFICATIONS

No.	Part	Material
1	Body	Cast Iron A 126 Class B
2	Bonnet	Cast Iron A 126 Class B
3	Disc	Cast Iron A 126 Class B
4	Packing Box	Cast Iron A 126 Class B
5	Gland	Cast Iron A 126 Class B
6	Hand Wheel	Cast Iron A 126 Class B
7	Operating Nut	Cast Iron A 126 Class B
8	Body Seat Ring	Bronze B 62
9	Disc Seat Ring	Bronze B 62
10	Stem Nut	Bronze B 62
11	Hand Wheel Washer	Zinc Coated Steel A 307 Grade B
12	Stem	Bronze B 21
13	Bonnet Bolt & Nut	Zinc Coated Steel A 307 Grade B
14	Packing Box Stud & Nut	Zinc Coated Steel A 307 Grade B
15	Gland Stud & Nut	Zinc Coated Steel A 307 Grade B
16	Hand Wheel Nut	Zinc Coated Steel A 307 Grade B
17	Bonnet Gasket	Non Asbestos 2214
18	Packing Box Gasket	Non Asbestos Sheet
19	Packing	Non Asbestos Sheet



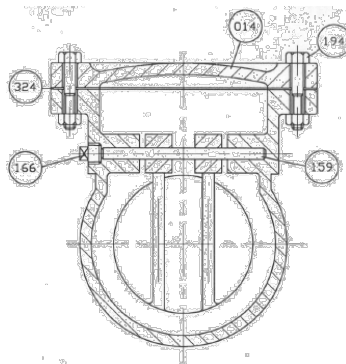
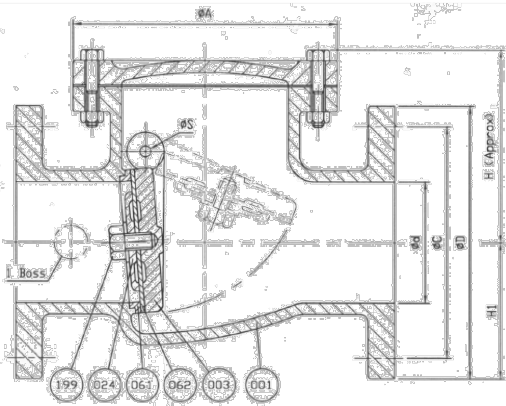
Flanged Cast Iron Swing Check Valve



FEATURES & BENEFITS

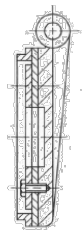
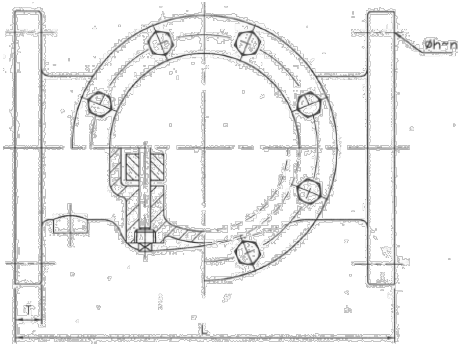
- ISO-9002
- Check Valve-Flanged Ends
- Class 125
- 200 CWP
- Resilient Seat
- Epoxy Coating
- Bolted Cover
- Full Waterway
- Conforms to MSS-SP-71
- Flanged Ends Conform with ANSI B16.1
- Suitable For Vertical & Horizontal Installation
- Sizes 2" - 12"

Applications:
Irrigation, Turf, Golf Course, Water Distribution, Pump Station



MATERIAL SPECIFICATIONS

No.	Part	Material	ASTM Designation
001	Body	Cast Iron	A 126 Class B
003	Disc	Cast Iron	A 126 Class B
014	Cover	Cast Iron	A 126 Class B
024	Seat Holder	2"-6" Cast Iron 8"-12" Ductile Iron	A 126 Class B A 536 Gr. 65-45-12
061	Body Seat Ring	Stainless Steel	A 276 Type 304
062	Disc Seat Ring	Rubber (Buna-N)	D 2000 BK 707
159	Hing Pin	Stainless Steel	A 276 Type 304
166	Plug	Malleable Iron	A 47
194	Cover Bolt & Nut	Zinc Coated Steel	A 307 Grade B
199	Seat Holder Bolt	Stainless Steel	A 276 Type 304
324	Cover Gasket	Rubber (Buna-N)	D 2000 BK 707



For Size 8" (200) - 12" (300)

DIMENSIONS

Part #	Size	L	ØD	ØC	Ø h	N	T	ØA	ØS	H	H1	Approx. Weight (lbs)
120F08	2"	8	6	4-3/4	3/4	4	5/8	5-5/16	1/4	4-3/16	3	19.8
120F09	2-1/2"	8-1/2	7	5-1/2	3/4	4	11/16	6-1/2	5/16	4-15/16	3-1/2	30.8
120F10	3"	9-1/2	7-1/2	6	3/4	4	3/4	7-1/8	5/16	5-15/16	3-3/4	41.8
120F11	4"	11-1/2	9	7-1/2	3/4	8	15/16	8-1/2	3/8	6-9/16	4-1/2	68.3
120F12	5"	13	10	8-1/2	7/8	8	15/16	9-11/16	1/2	7-5/16	5	79.3
120F13	6"	14	11	9-1/2	7/8	8	1	11-7/16	1/2	7-11/16	5-1/2	114.6
120F14	8"	19-1/2	13-1/2	11-3/4	7/8	8	1-1/8	14-3/8	3/4	9-1/4	6-3/4	231.4
120F15	10"	24-1/2	16	14-1/4	1	12	1-3/16	17	7/8	10-11/16	8	357
120F16	12"	27-1/2	19	17	1	12	1-1/4	19-7/8	7/8	12-5/8	9-1/2	498.1

Flanged Cast Iron Globe Valve

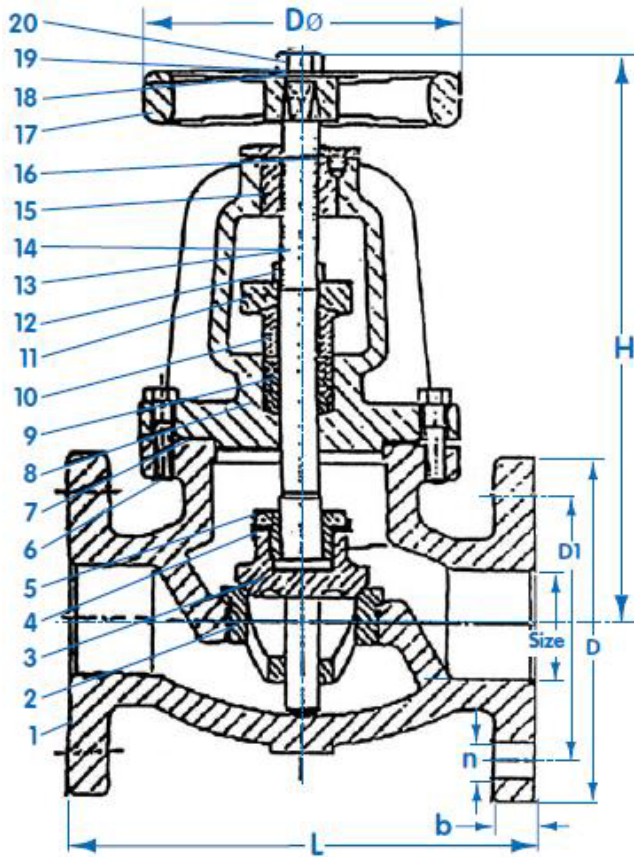


FEATURES & BENEFITS

- Globe Valve - Flanged Ends
- 200 WOG - 125 SWP
- Bituminous Coating
- Bolted Bonnet
- Outside Screw & Yoke Rising Stem
- MSS-SP-85 Conformance
- Flanged Ends Conform with ANSI B16.1
- Sizes 2" - 8"

DIMENSIONS

Size	L	D	D1	b	n	DØ	H	Cv	Approx Wt. LBS
2"	8.0	5.99	4.77	.63	4	7.01	10.20	45	35.3
2-1/2"	8.5	7.01	5.52	.69	4	7.01	11.82	70	46.3
3"	9.5	7.49	6.01	.75	4	7.88	12.53	105	57.3
4"	11.5	9.01	7.51	.94	8	10.01	15.84	195	97.8
6"	14.0	11.01	9.51	1.00	8	11.82	18.87	465	183.0
8"	19.5	13.51	11.76	1.13	8	13.71	21.16	860	297.6



MATERIAL SPECIFICATIONS

No.	Part	Material	ASTM Designation
1	Body	Cast Iron	A126 Class B
2	Seat Ring	Cast Bronze	B62
3	Disc	Cast Bronze	B62
4	Disc Washer	Brass	B16
5	Swivel Nut	Cast Brass	B584
6	Bolt	Steel	A307-B
7	Body Gasket	Non-Asbestos	
8	Bonnet	Cast Iron	A126 Class B
9	Packing	Non-Asbestos	
10	Packing Gland	Steel	B584
11	Gland Follower	Ductile Iron	A536 65-45-12
12	Bolt	Steel	A307-B
13	Nut	Steel	A307-B
14	Stem	Brass	B16
15	Yoke Bushing	Cast Bronze	B62
16	Screw	Steel	A307-B
17	Handwheel	Cast Iron	A126 Class B
18	Identification Plate	Aluminum	
19	Washer	Steel	A307-B
20	Nut	Steel	A307-B

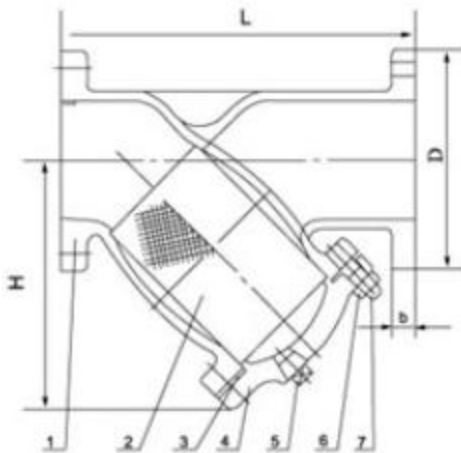
Flanged Cast Iron Y Strainer



APPLICATION: Low Pressure Steam, Water, Air, and Non-Corrosive Gas or Oil.

CHART FOR SCREEN

Size	Screen Opening	Holes Per Square Inch	Standard Material
2" - 5"	1/16" Perf.	144	Stainless Steel
6" - 12"	1/8" Perf.	32	Stainless Steel



FEATURES & BENEFITS

- Y Strainer - Flanged Ends
- Class 125 Flanged Ends
- 200 WOG - 125 WSP
- Maximum Temperature 450° F
- Bolted Cover With Blow Out Port & Plug
- Standard Screen is Perforated 304 S.S
- Conforms With ANSI B16.1.
- ISO-9002
- Sizes 2" - 12"

DIMENSIONS

Part #	Size	L	D	b	H
140F08	2"	8.88	6.00	0.62	5.67
140F09	2-1/2"	10.75	7.00	0.69	6.93
140F10	3"	11.50	7.50	0.75	7.68
140F11	4"	13.88	9.00	0.94	9.69
140F12	5"	16.38	10.00	0.94	11.81
140F13	6"	18.50	11.00	1.00	12.60
140F14	8"	21.38	13.50	1.12	15.63
140F15	10"	26.00	16.00	1.19	19.02
140F16	12"	30.00	19.00	1.25	22.05

CHART FOR PLUG IN CAP

Strainer Size	Plug Size	Strainer Size	Plug Size
2"	1/2" NPT	4"	1-1/2" NPT
2-1/2" - 3"	1" NPT	5" - 12"	2" NPT

MATERIAL SPECIFICATIONS

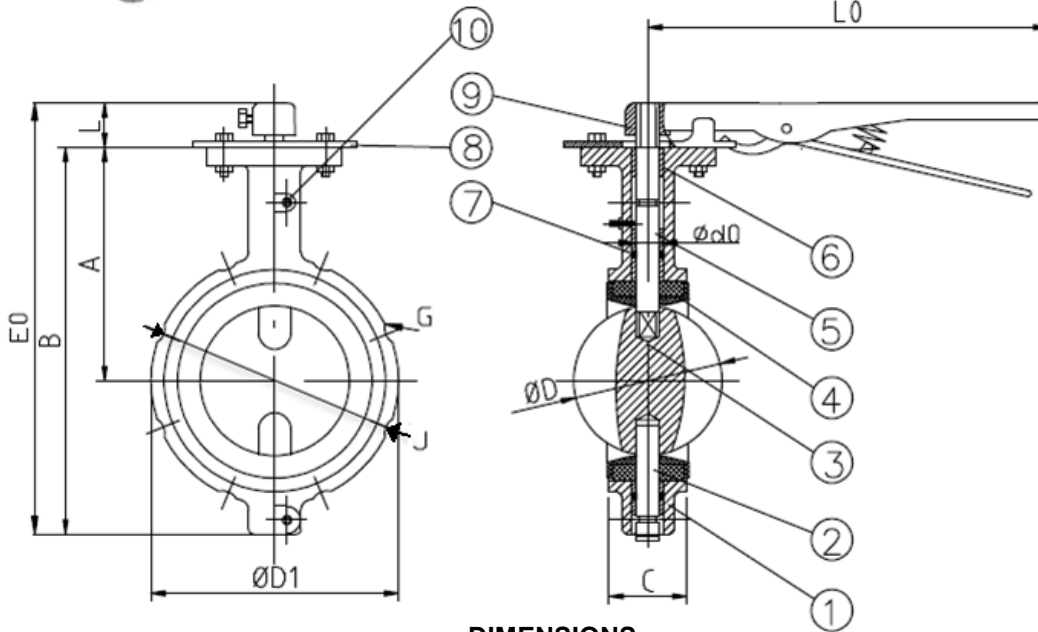
No.	Part	Material	ASTM Designation
1	Body	Cast Iron	ASTM A126 B
2	Screen	Stainless Steel	304
3	Gasket	Graphite Steel	
4	Cover	Cast Iron	ASTM A126 B
5	Plug	Malleable Iron	
6	Nut	Steel	ASTM A307-B
7	Stud	Steel	ASTM A307-B

Butterfly Valve Wafer Style



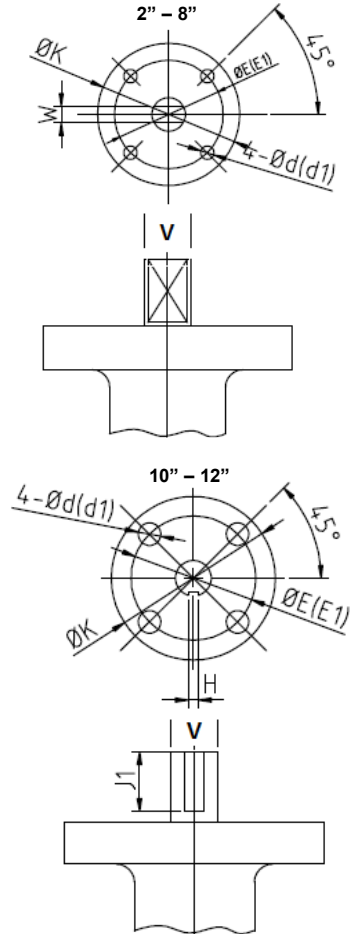
FEATURES & BENEFITS

- Cast Iron Body
- 200 PSI
- 10 Position Lever Handle
- Short Neck with Zurk Fitting
- Two-Piece Valve Stem
- API 598 & API 609
- MSS SP-67 Compliant
- Sizes 2" - 12"



DIMENSIONS

Size	Wt.	A	B	C	D	L	D1	K	E	E1	4-Ød	4-Ød1	L0	G	d0	J	V	W	J1	H	E0
2"	7.05	4.57	7.33	1.64	2.08	1.00	4.12	4.00	3.25	1.97	0.44	0.28	10.48	5/8"	0.50	3.98	0.50	0.35	-	-	8.33
2-1/2"	9.04	4.77	7.92	1.74	2.54	1.00	4.65	4.00	3.25	1.97	0.44	0.28	10.48	5/8"	0.50	4.53	0.50	0.35	-	-	8.92
3"	9.92	4.88	8.87	1.73	3.10	1.00	5.12	4.00	3.25	1.97	0.44	0.28	10.48	5/8"	0.50	5.00	0.50	0.35	-	-	9.87
4"	12.79	6.00	10.09	2.02	4.10	1.00	6.86	4.00	3.25	2.76	0.44	0.39	10.48	5/8"	0.62	6.50	0.63	0.43	-	-	11.09
5"	17.42	6.26	11.15	2.13	4.86	1.18	7.49	4.00	3.25	2.76	0.44	0.39	10.48	3/4"	0.75	7.09	0.69	0.50	-	-	12.33
6"	19.18	6.50	11.53	2.18	6.11	1.18	8.61	4.00	3.25	2.76	0.44	0.39	10.48	3/4"	0.75	8.20	0.75	0.50	-	-	12.71
8"	32.41	7.92	14.18	2.37	7.98	1.38	11.17	6.05	5.00	4.02	0.56	0.47	13.99	3/4"	0.87	10.54	0.87	0.63	-	-	15.56
10"	45.64	9.98	17.40	2.57	9.87	1.38	13.49	6.05	5.00	4.02	0.56	0.47	19.90	7/8"	1.12	12.81	1.14	-	1.00	0.25	18.78
12"	74.96	12.21	21.87	3.01	11.88	1.42	16.13	6.05	5.00	4.02	0.56	0.47	19.90	7/8"	1.25	15.62	1.25	-	1.00	0.25	23.29



MATERIAL SPECIFICATIONS

No.	Part	Material
1	Body	Cast Iron
2	Stem	416 Stainless Steel
3	Disc	Ductile Iron or Aluminum Bronze
4	Seat	BUNA
5	Stem	416 Stainless Steel
6	Bushing	PTFE
7	O-Ring	BUNA
8	Indicator	Carbon Steel
9	Lever	Cast Iron
10	Pin	Carbon Steel

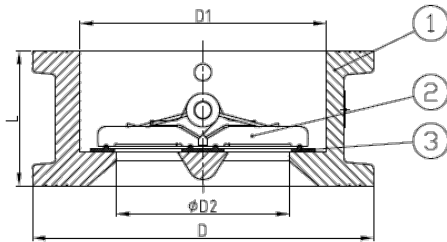
Ductil Iron Check Valve



FEATURES & BENEFITS

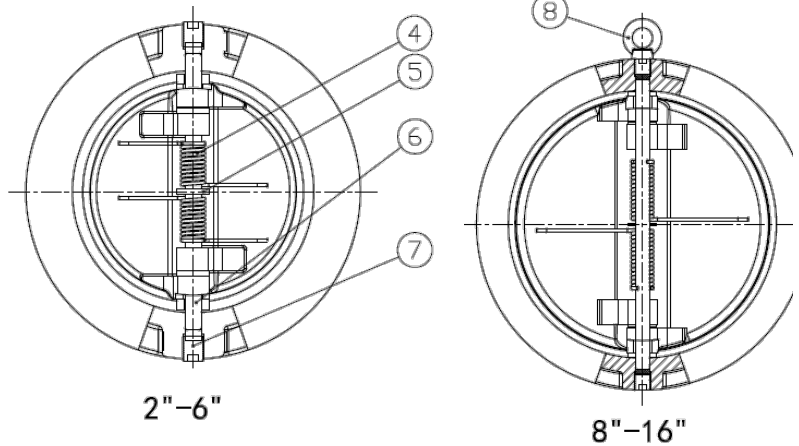
- Check Valve-Wafer Style Body
- 300 WOG
- Spring Loaded Double Disc
- 4", 6", 8" Approved as Chemigation Valve
- Suitable for Vertical & Horizontal Installation
- Fits Flanges that Conform to ANSI B16.1
- Fusion Bonded Epoxy Coating ANSI/AWWA C550
- NSF/ANSI 61
- Sizes 2" -16"

Install between Class 125 flanges. Install 5 pipe diameters minimum downstream from pump discharge or elbow to avoid flow turbulence.



DIMENSIONS

Size	Part #	L	D	D1	D2
2"	CVC-2	2.13	4.21	2.52	1.81
2-1/2"	CVC-2.5	2.13	5.00	3.07	2.36
3"	CVC-3	2.24	5.59	3.70	2.76
4"	CVC-4	2.52	6.38	4.61	3.31
5"	CVC-5	2.76	7.56	5.71	4.53
6"	CVC-6	2.99	8.58	6.69	5.28
8"	CVC-8	3.74	10.75	8.82	7.24
10"	CVC-10	4.25	12.91	10.43	8.66
12"	CVC-12	5.63	16.02	12.20	10.24
14"	CVC-14	7.24	17.24	14.17	11.89
16"	CVC-16	7.56	20.12	16.14	13.78



MATERIAL SPECIFICATIONS

No.	Part	Material
1	Body	Ductile Iron ASTM 6-45-12
2	Disc	Aluminum Bronze C954
3	Seat	BUNA-N
4	Spring	Stainless Steel 304
5	Washer	PTFE
6	Hinge Pin	Stainless Steel 410
7	Hexagon Socket Screw	Carbon Steel Zinc Plated
8	Eye Bolt	Carbon Steel Zinc Plated